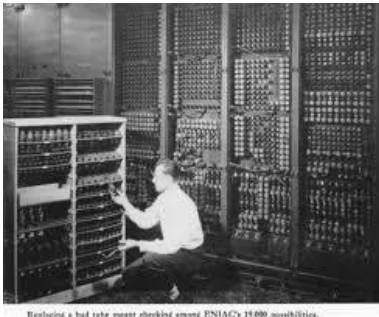




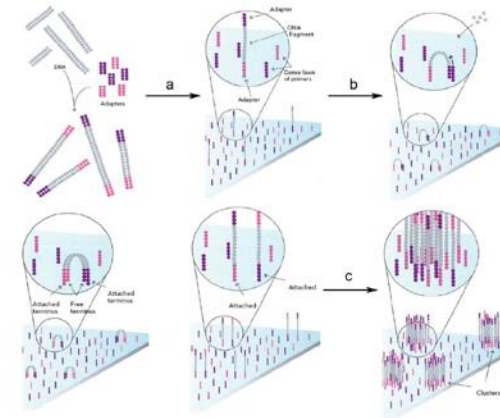
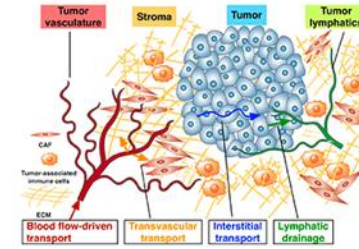
Advanced Genomics and Smart Medicine





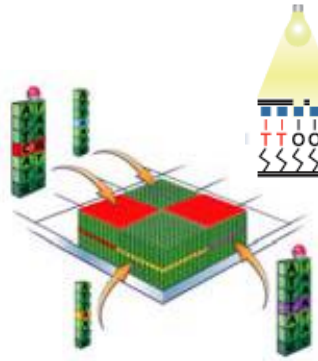

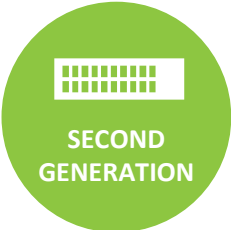
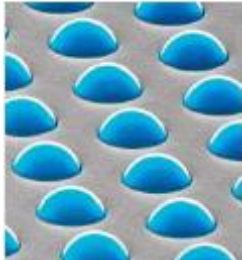


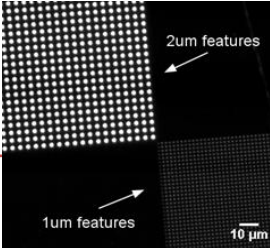
Current DNA Sequencing Tech



Replacing a bad tube meant checking among ENIAC's 15,000 possibilities.



Evolution of DNA Chips

	 <p>FIRST GENERATION</p>	<p>First Generation, Affymetrix, Genotyping, Gene expression,</p> <p><i>High density</i> <i>Poor probes</i></p>	
	 <p>SECOND GENERATION</p>	<p>Second Generation Genotyping, Gene expression</p> <p><i>Low density</i> <i>High quality probes</i></p>	
	 <p>NEW GENERATION</p>	<p>New Generation Genotyping, Gene expression, Sequencing</p> <p><i>High density</i> <i>High quality probes</i> <i>Sequencing compatible</i> <i>Enabling Spatial Sequencing</i></p>	

Centrillion's Flexible and Highly Accurate Zion™ System

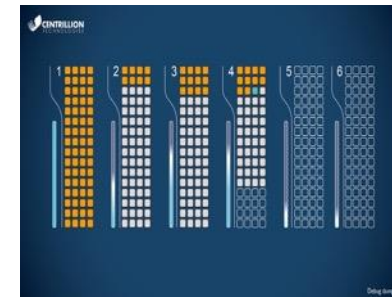
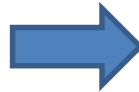
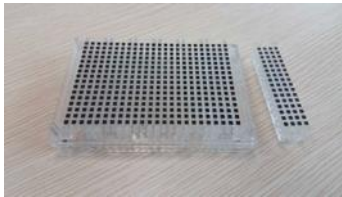
Saliva or Blood Sample



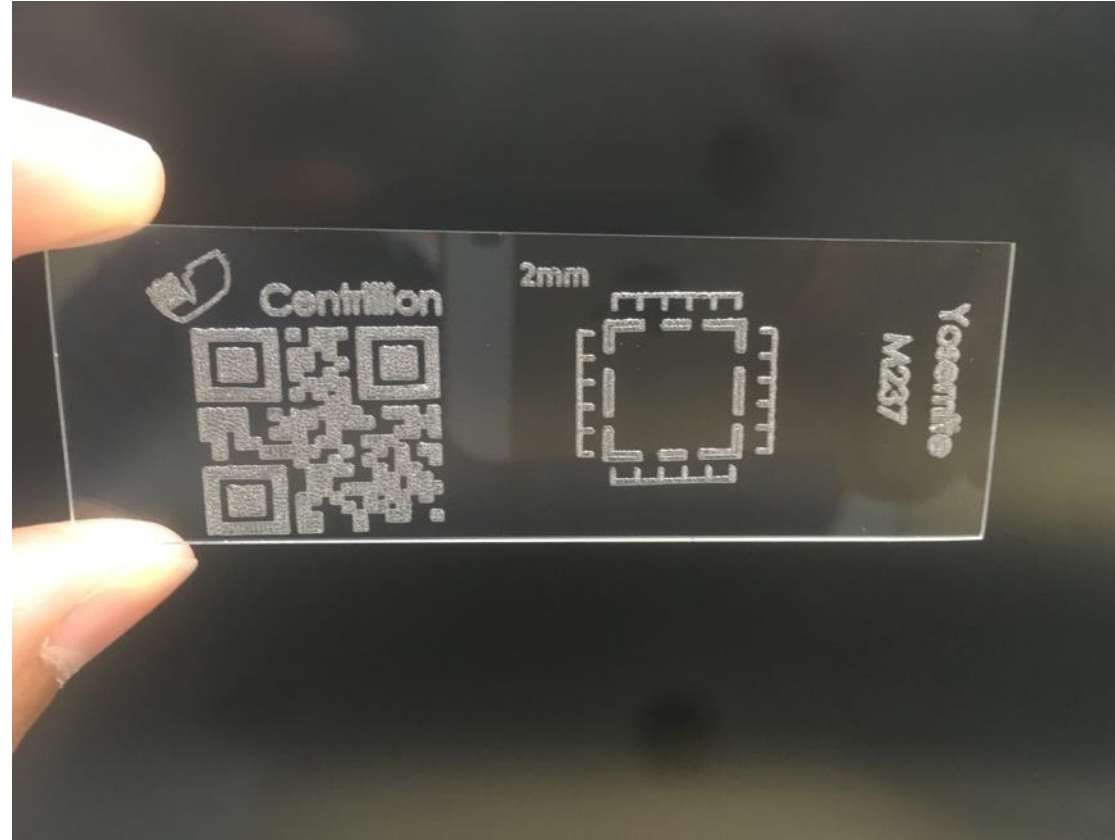
Centrillion Hummingbird™ Assay



- 384 Samples per Plate
- Triplicate assay
- User defined content
- Up to 200k SNP content

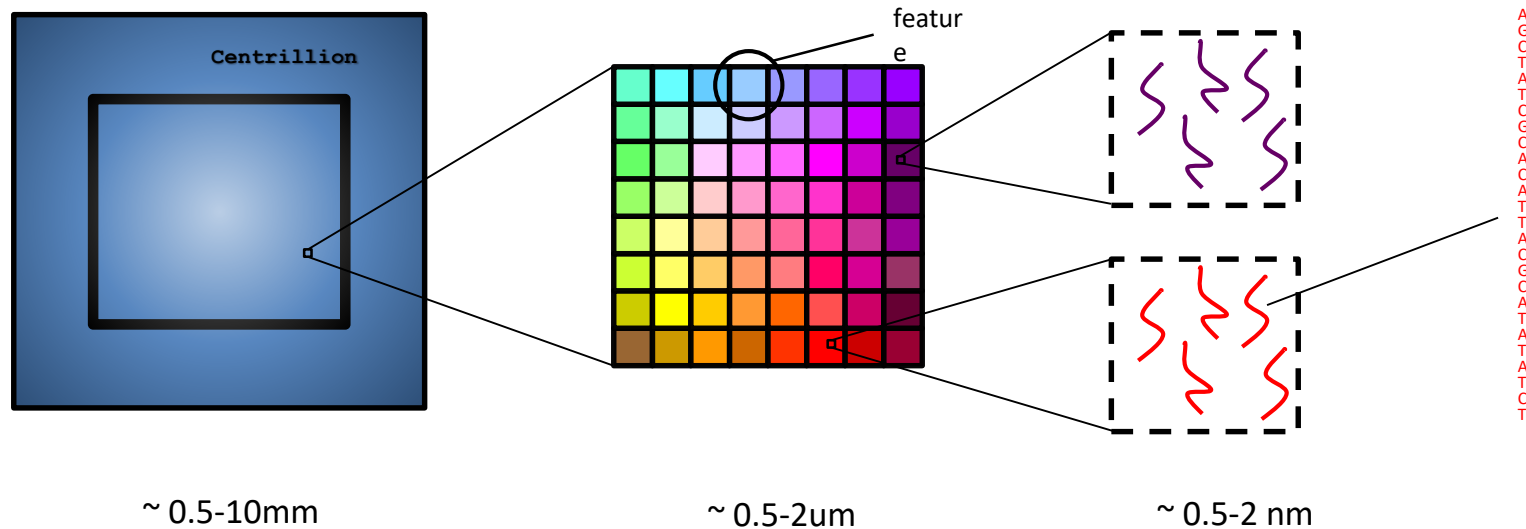


Yosemite™ Zipcode

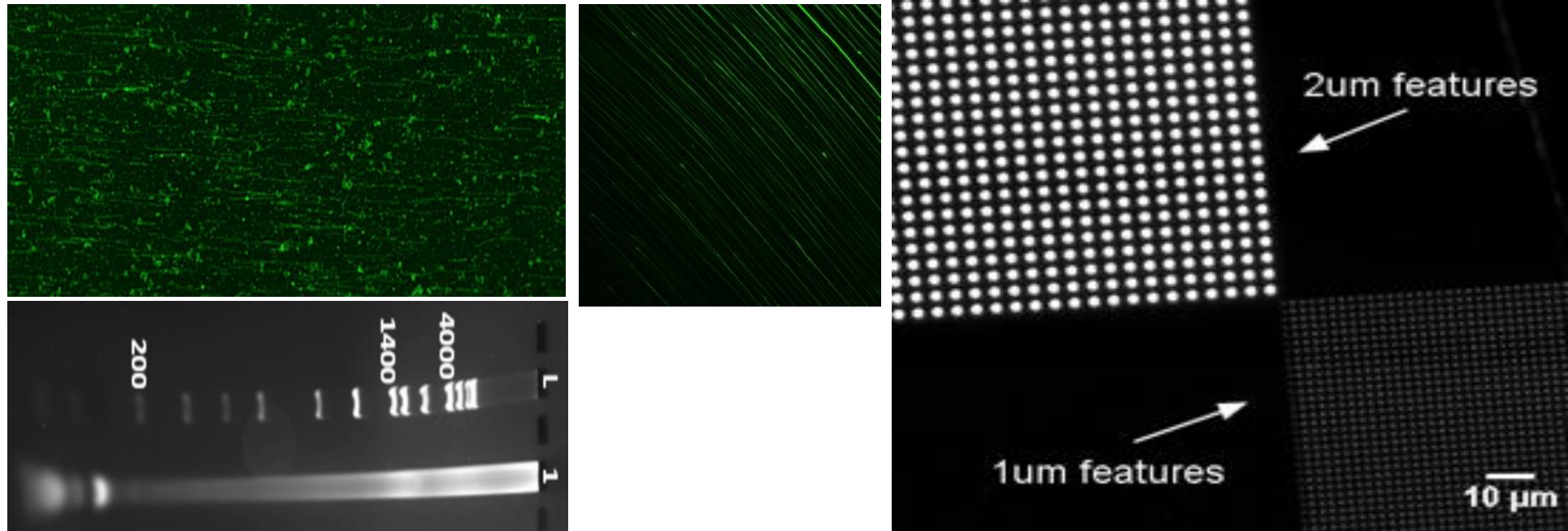


What is a DNA Zipcode Chip?

A DNA zipcode chip is a chip with tens of millions of micron-scale features, each of which contains thousands of copies of a unique DNA sequence, i.e., DNA zipcode.

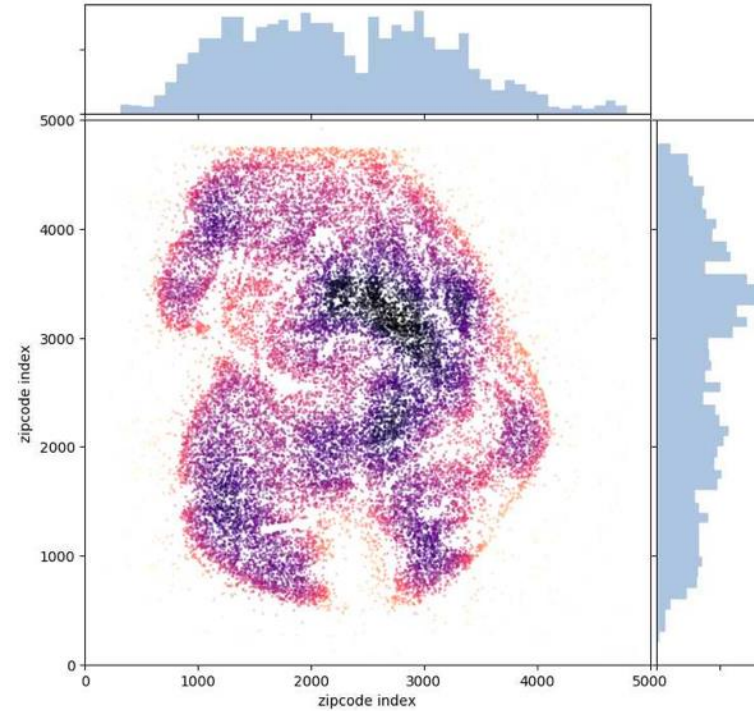
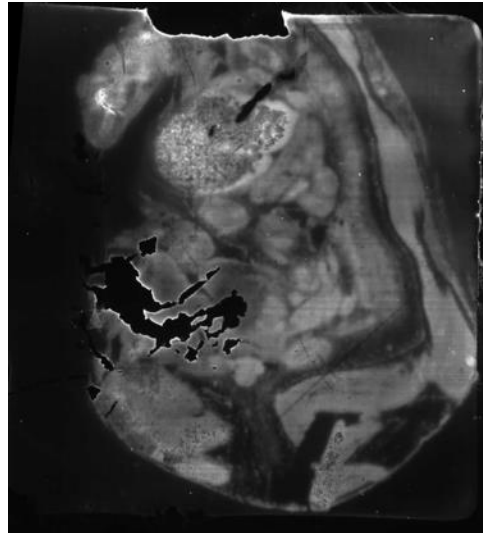


New Generation of Sequencing-Compatible DNA Chips

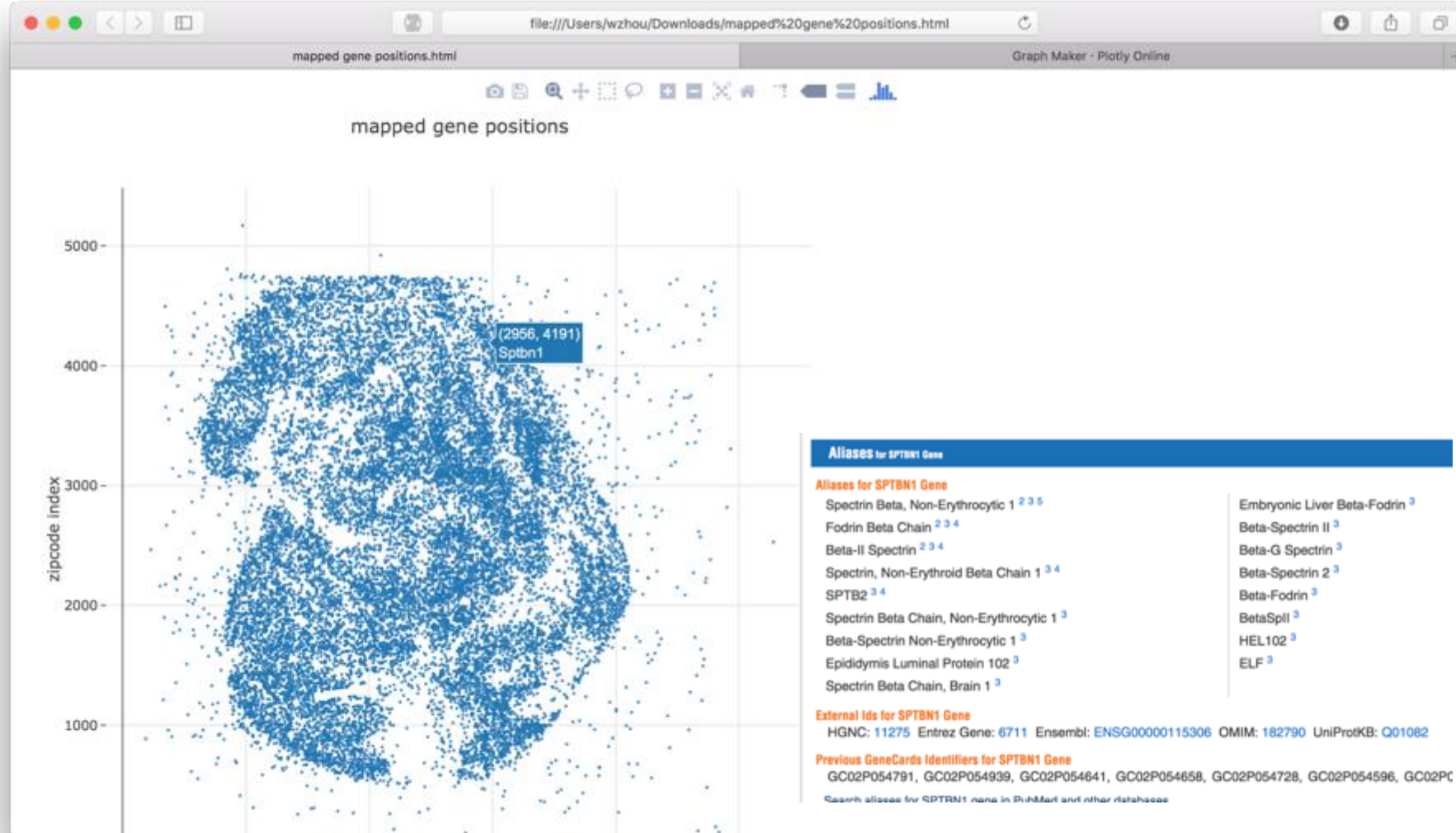


Combines the high density of first-generation chips with the high-quality probes of more recent innovations

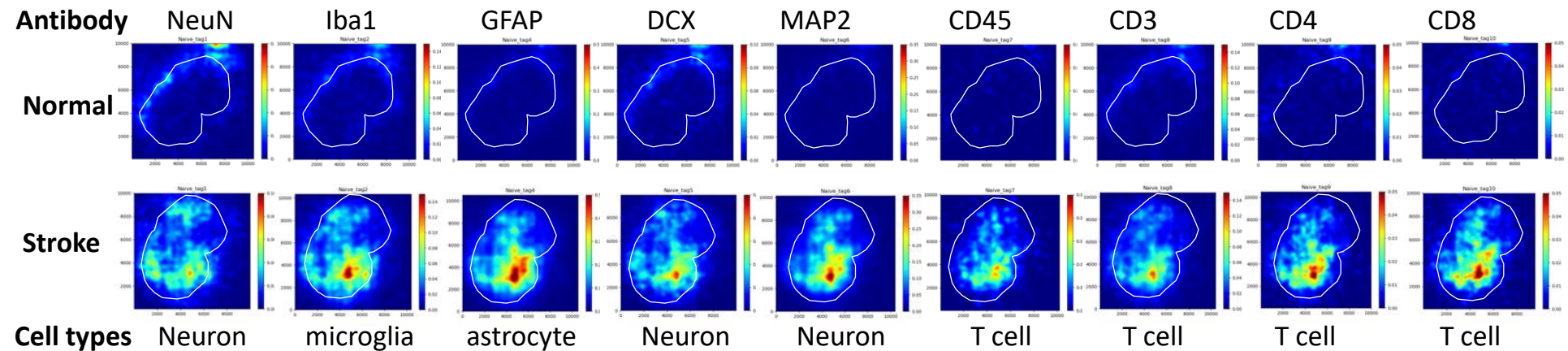
Spatial Whole Transcriptome



Interactive View of the Transcriptome



Inflammatory cells increased in ischemic brain



Centrillion Clinical Genomics



Putting Patients in Focus

[BROWSE MENU](#)[ORDER TEST](#)Smart Panels
▼Specialty Tests
▼Single-Gene
Sequencing
▼[ORDER TEST](#)

Print

Panel Name	Price	CPT Code
Achromatopsia Plus BCM Panel, (NGS), 6 genes plus the BCM genes (ATF6, CNGA3, CNGB3, GNAT2, PDE6C, PDE6H)	\$950	81479
Ashkenazi Jewish Panel, 7 genes (CLRN1-N48K, DHDDS-K42E, MAKK429insAlu, FAM161A-c.1355-6delCA, FAM161Ac.1567C>T, LCA5-Q279X,PCDH15-R245X, CACNA2D4-delExon17-26, TRPM1-delExon2-7)	\$500	81407
Bardet-Biedl Syndrome Panel, (run by MVL Vision Panel), 23 genes (ARL6, BBIP1, BBS1, BBS2,BBS4, BBS5, BBS7, BBS9, BBS10, BBS12, C8ORF37, CEP290, IFT172,IFT27, INPP5E, KCNJ13, LZTFL1, MKKS, MKS1, NPHP1, SDCCAG8, TRIM32, TTC8)	\$1,500	81479
Blue Cone Monochromacy (BCM) Panel, (NGS), 2 genes (Locus Control Region, OPN1LW-OPN1MW)	\$500	81479
Common Hearing Loss Panel, 3 genes (SLC26A4, GJB2, GJB6)	\$500	81479

Pricing

Pricing is for institutional clients only. [Contact us](#) to learn more about self-pay discounts. [Get assistance](#) with insurance billing and coverage availability.

Centrillion OneTube™ Sequencing Library Kits provide better accuracy
in detecting vision disease



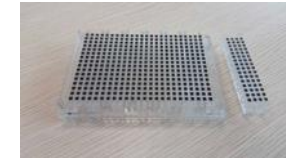
Centrillion Focus on Consumer Genomics

**The actionable DNA health test.
Now with Advanced Ancestry.**

[PLAY VIDEO](#)

TeloYears
Control how well you're
aging
based on your telomere
length

NEW! Advanced Ancestry
The world's first next
generation sequencing-
based ancestry service





Centrillion Chip Manufacturing in Hangzhou, China

Clinic Applications in China

-Integrating Genomics with WeDoctor's Cloud HMO



Centrillion Health (China)



Centrillion Summit™ System